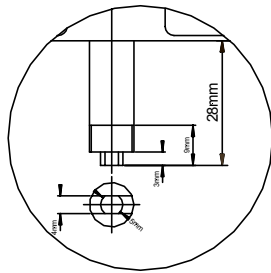
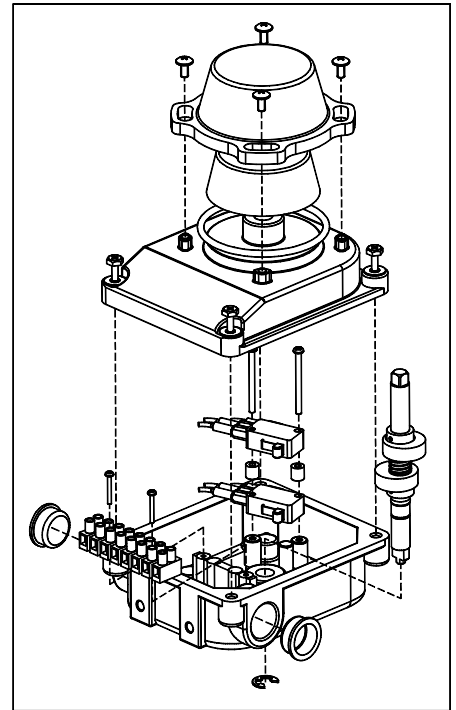


Features

- 1) Visual Position Indicator
- 2) "Quick-Set" Cams: The cams require no tools to adjust. Cams are spring loaded and splined to allow infinite 360° position sensing. Cams are adjusted by lifting off spline rotating and releasing to new spring set position.
- 3) Multipoint Terminal Strip: 8 contact standard for units with micro switches..
- 4) Dual ½" conduit entry.
- 5) Captive cover bolts.
- 6) NAMUR shaft: Allows for direct attachment to actuator shafts without need for a coupler.



SHAFT DETAIL

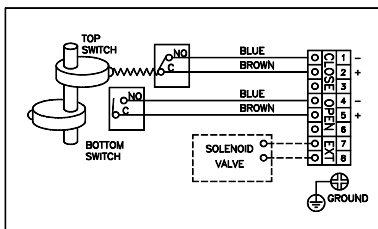


Specification

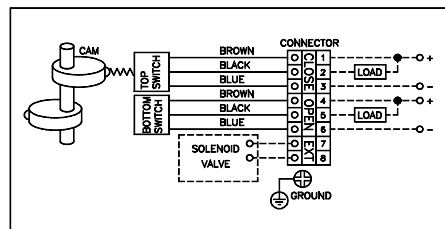
Model	ES-900	ES-900P
Enclosure Protection	Weather proof, IP67	
Ambient Temp	-10 to 185 ° F	
Switch Type	Mechanical Switch	Proximity Sensor
Voltage	15A-1/2HP-125 or 250VAC, 0.6A-125VDC, 0.3A-250VDC, 15(3)A 250V ~ μT85+++	12~24 VDC (Operating Voltage : 10~30 VDC)
Mounting Bracket	NAMUR VDI/VDE 3845, ISO 5211	
Terminal	8 Points	

Wiring Diagram

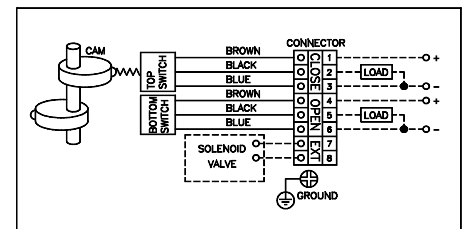
Mechanical Switch
(2 SPDT)



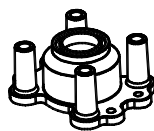
Proximity Switch
(Output Type: NPN)



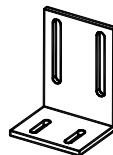
Proximity Switch
(Output Type: PNP)



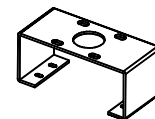
Typical Mounting Brackets:



Included for
Smaller actuators



L-Type
(optional)



ISO Type