



EW SERIES ELECTRIC ACTUATORS

EW 350

Radius L.L.C.
4922 Technical Drive
Milford MI 48381
Phone: 248.685.0773
Fax: 248.685.0740
www.radius-eng.com

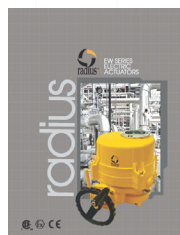
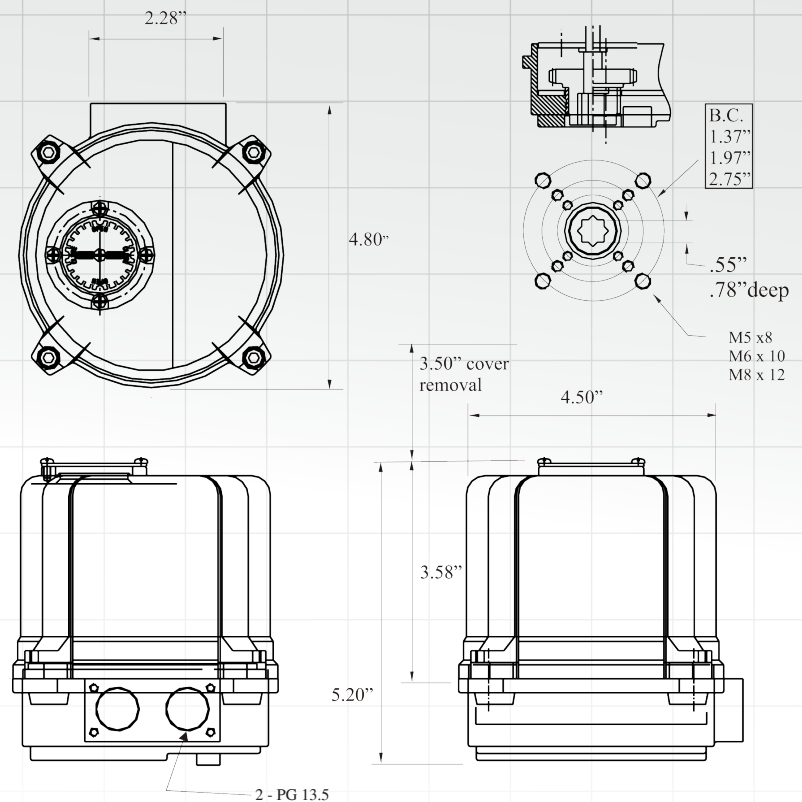


The Series EW350 is perfect for small ball and plug valves. The motor is a specially designed induction motor that produces high starting torques and is thermally protected from overheating. Supplied with wrench for manual operation.



High visibility position indicator standard on all EW series actuators

TECHNICAL INFORMATION	
Rated Torque (in. lbs.)	350
Duty Cycle	S2: 50% max 30 minutes
Operating Speed (in. / sec) (VAC)	
50 Hz	14
60 Hz	12
Rated Current (A)	
1 Phase / 110 V / 50 Hz	0.27
60 Hz	0.27
1 Phase / 220 V / 50 Hz	0.18
60 Hz	0.18
3 Phase / 380 V / 50 Hz	N/A
60 Hz	N/A
3 Phase / 440 V / 50 Hz	N/A
60 Hz	N/A
DC 24 V	0.80
Insulation Class	
	E
Weight (lbs.)	
	6.6
No. of wheel turns	
	7.5
Enclosure	
	IP66, O-ring sealed
Motor	
	Induction Motor
Limit Switch	
	2 each open/close + two auxiliary limit switches
Space Heater	
	2W
Indicator	
	Continuous mechanical position indicator
Manual Operation	
	Extruded shaft on bottom
Mounting	
	ISO F03/F05/F07 flange with double square female shaft
Travel Angle	
	90° ± 10°
Cable Entries	
	2 - PG 13.5
Terminal Block	
	Spring loaded push type
Surface protection	
	Anodized polyester coating
Ambient temperature	
	-4°F ~ +158°F



Modulating versions available. Please contact factory.

