



# EW SERIES ELECTRIC ACTUATORS

## EW 700

Radius L.L.C.  
4922 Technical Drive  
Milford MI 48381  
Phone: 248.685.0773  
Fax: 248.685.0740  
www.radius-eng.com

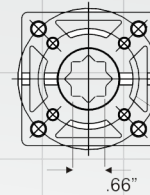
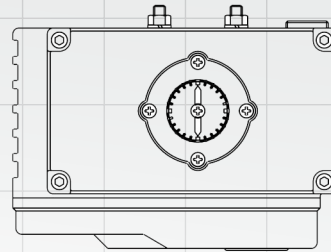


The Series EW700 provides a high output torque while compact in size. The drive system utilizes a self locking combination spur and worm gear that requires no brake. The motor is a specially designed induction motor that produces high starting torques and is thermally protected from overheating. Supplied with wrench for manual operation

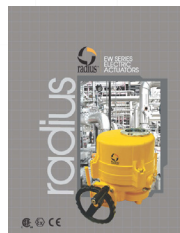
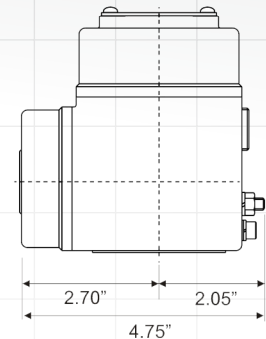
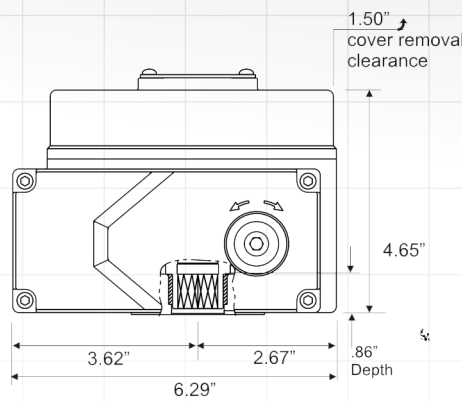


High visibility position indicator standard on all EW series actuators

TECHNICAL INFORMATION	
Rated Torque (in. lbs.)	700
Duty Cycle	S2: 40% max 30 minutes
Operating Speed (in. / sec) (VAC)	
50 Hz	16
60 Hz	15
Rated Current (A) / Maximum (A)	
1 Phase / 110 V / 50 Hz	0.97 / 1.18
60 Hz	0.97 / 1.26
1 Phase / 220 V / 50 Hz	0.52 / 0.82
60 Hz	0.52 / 0.73
3 Phase / 380 V / 50 Hz	0.52 / 0.73
60 Hz	0.52 / 0.68
3 Phase / 440 V / 50 Hz	0.56 / 0.57
60 Hz	0.56 / 0.62
DC 24 V	0.80
Insulation Class	
	E
Weight (lbs.)	
	7.7
No. of wheel turns	
	7
Enclosure	
	Weatherproof IP67, O-ring sealed
Motor	
	Induction Motor
Limit Switch	
	2 each open/close + 2 auxiliary switches
Space Heater	
	3W
Indicator	
	Continous mechanical position indicator
Manual Operation	
	By wrench (M6) directly to the worm gear
Mounting	
	ISO F05 & F07 flange with double square female shaft
Self Locking	
	By means of worm gearing
Travel Angle	
	90° ± 10° by external adjustable mechanical stopper
Cable Entries	
	2 - M20 x 1.5 (option: 2-PF 1/2")
Terminal Block	
	Spring loaded push type
Surface protection	
	Anodized polyester coating
Ambient temperature	
	-4°F ~ +158°F



B.C. x Thd. x Depth  
1.97" x M6 x .60"  
2.76" x M8 x .70"



Modulating versions available. Please contact factory.

