



Limit Switch Box (EX-900) Explosion Proof (Ex d II C T6 IP67)



*** Thank you for using Radius L.L.C. product. This Manual has been written with the objective of user convenience. Please do not make modifications to any such information, unless otherwise arranged.**

General

RADIUS Limit Switch box has been designed to install easily as well as for accurate monitoring and viewing the conditions of valve and actuator. Please be sure to read this manual carefully and thoroughly prior to installation and operation.



Product Specification

Model	RX-900-0	RX-900-1	RX-900-2	RX-900-3	RX-900-4	RX-900-5	RX-900-6
Ambient Temperature	-4°F ~ 185°F						
Cable Entry	2 – 3/4" NPT						
Terminal Block	8 ~ 12 Point						
Position Indicator	0° ~ 90° (Red for Close / Yellow for Open)						
Switch Type	2SPDT	Proximity (PNP)	Proximity (NPN)	Proximity (DC 2 Wire)	3SPDT	4SPDT	2DPDT
Painting	Black Polyester Powder Coating						
Bracket	Steel (AB1 OR AB2)						
Enclosure	Ex d II C T6 (IP67)						

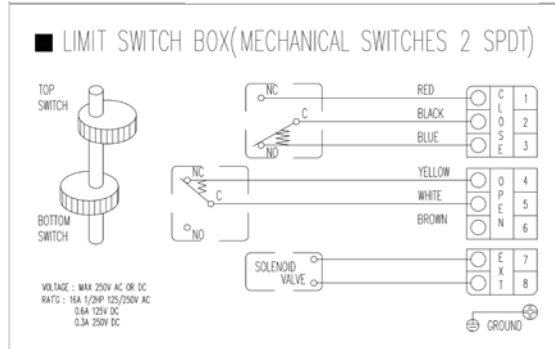
Mounting Bracket

Model	Material	Size (Width * Length * height) (mm)
AB1 (Standard) 	Stainless	30 * 80 * 20
AB2 	Stainless	30 * 130 * 30

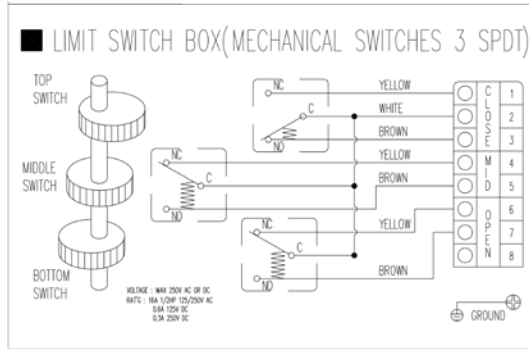


Wiring Schematics

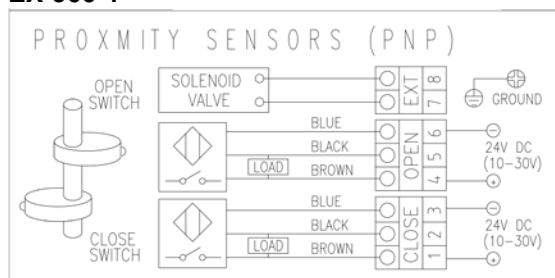
EX-900-0



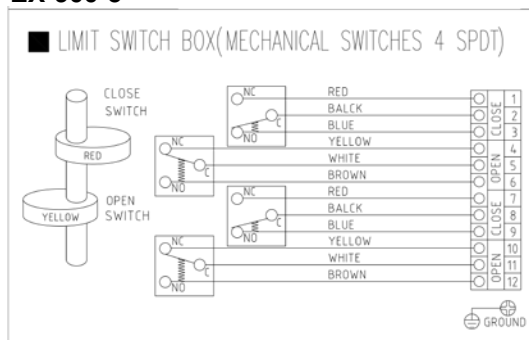
EX-900-4



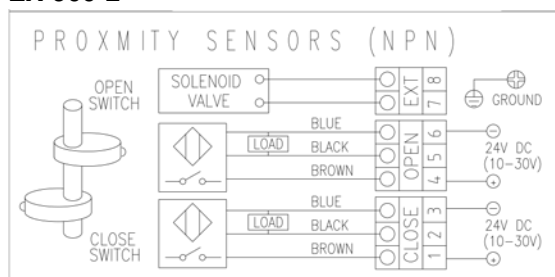
EX-900-1



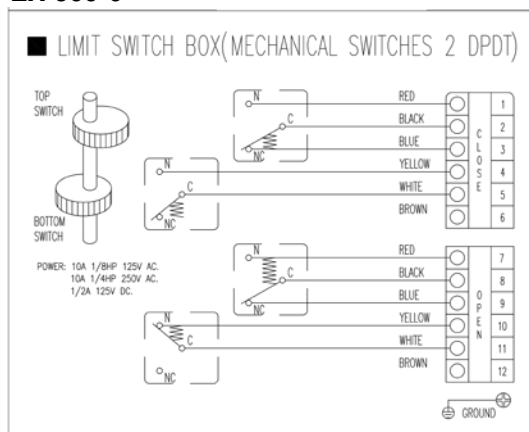
EX-900-5



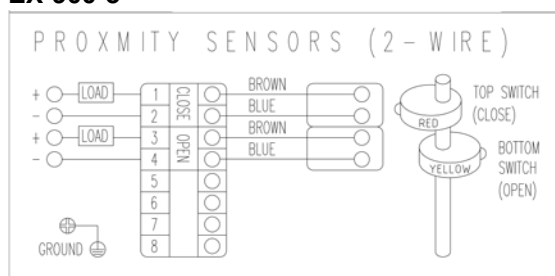
EX-900-2



EX-900-6



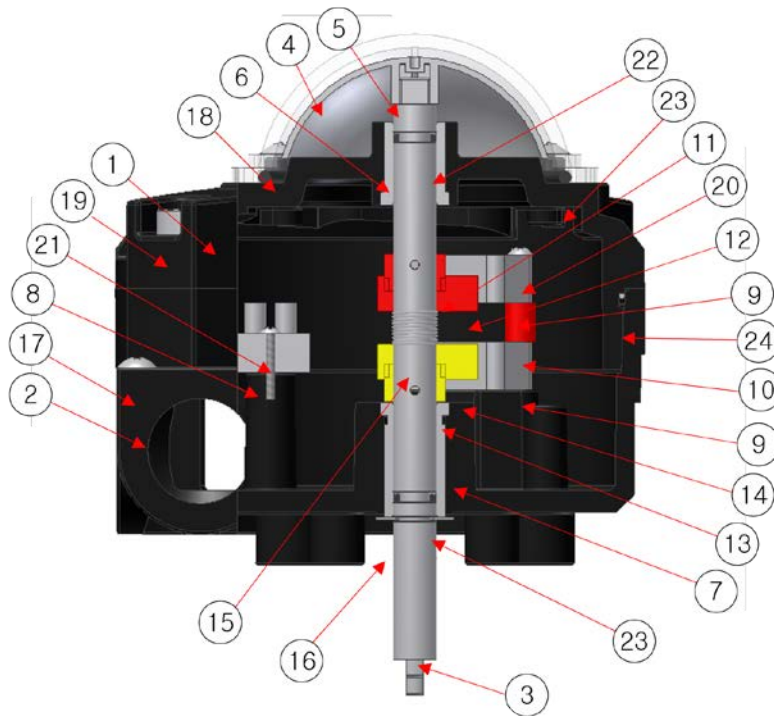
EX-900-3





Product Structure

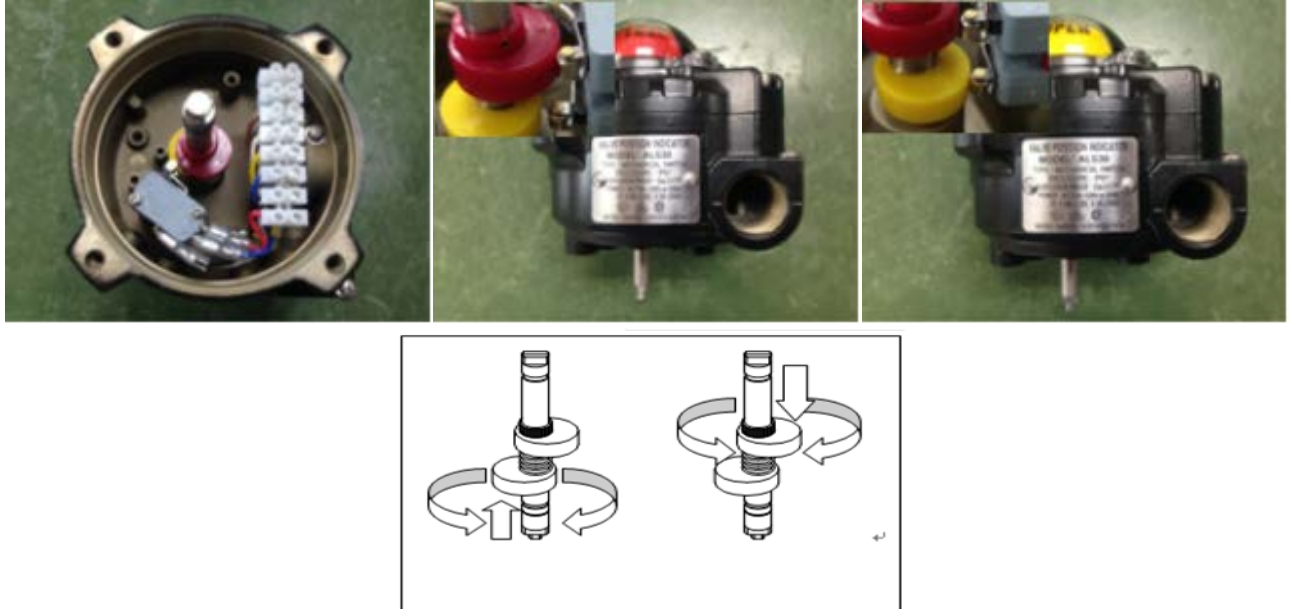
- Parts name and structure (EX-900)



No.	Name of Part	Qty	Material	No.	Name of Part	Qty	Material
1	Cover	1	Aluminum	13	Cam fixed base(Close)	1	PC
2	Body	1	Aluminum	14	Cam(Close)	1	PC
3	Shaft	1	Stainless	15	Cam Spring	1	SWPA
4	Indicator Cover	1	PC	16	E Snap Ring	1	Stainless
5	Indicator	1	PC	17	Ground Bolt	1	Stainless
6	Cover Insert	1	Bronze	18	Indicator Cover Bolt	4	Stainless
7	Body Insert	1	Bronze	19	Cover Bolt	4	Stainless
8	Terminal Block	1	PC	20	Limit Switch Bolt	2	Stainless
9	Limit Switch	2	PC	21	Terminal Block Bolt	2	PC
10	Limit Switch fixed base	2	PC	22	Shaft O-ring	2	NBR
11	Cam fixed base(Open)	1	PC	23	Indicator Cover O-Ring	1	NBR
12	Cam(Open)	1	PC	24	Body O-Ring	1	NBR



Switch Adjustment



1. Loosen cover bolts (19) and remove cover (1).
2. Rotate actuator to full counter-clockwise position
3. Lift bottom cam (14) and turn until switch is activated and release
4. Push down top cam (12) and turn until switch is activated and release.
5. Please cover (1) back on and tighten cover bolts.

Storage

If not in use for a long duration, keep in a cool and dry space as well as block the entrance of electric wire to protect it from moisture and dust.

*** Radius does not assume the responsibility for any property damages or personal injuries caused by the User's operating faults or arbitrary design change & improper maintenance works***

Customer support

Address: 4922 Technical Drive Milford, MI 48381
Telephone: (248) 685-0773
Fax: (248) 685-0740
RADIUS EMAIL: SALES@RADIUS-ENG.COM