



Radius EX-900 Explosion Proof Limit Switch

Features and Benefits

- Valve Position Indicator
- Quick-Set Cam
The operating position of the switches can be easily changed by hand without the need for tools.
- Easy Wiring
8 point terminal strip.
- Dual 3/4" conduit entries
- Captive Cover Bolts
- Includes SS NAMUR bracket for most smaller size actuators. Larger brackets are optional.

Switch Options

Mechanical



Voltage: Max 250 VAC or DC
.6A at 250 VDC
.3A at 250 VDC
16A at 125, 250 VAC

Proximity PNP / NPN



Response frequency: 800 Hz
Power Supply Voltage: 12 - 24 V DC
Control Output
Open/Close capacitance: 200 mA max
(Resistive load)
Residual Voltage: 1.5 V max
Current Consumption: 6 mA max
Operation indication: Red LED

DC 2 Wire



Response frequency: 500 Hz
Power Supply Voltage: 12 - 24 V DC
Control Output
Open/Close capacitance: 100 mA max
(Resistive load)
Residual Voltage: T (Polarity) : 3.5 V
max, U (Non polarity) : 5 V max
Leakage current: 1 mA max
Operation indication: Red LED



Certifications

- IP 68
- Low Voltage - Directive 2006/95/EC
- Class I, Division 1, Groups A, B, C and D
- Flameproof for Class I, Zone 1
- Dust-Ignition proof for Class II/III, Division 1, Groups E, F and G hazardous (classified) locations
- ATEX Ex d IIC T5



Specifications

DESCRIPTION	SERIES ALS 3X
Ambient Temperature	-4°F to 185°F
Cable Entry (Standard)	2 x 3/4" PF/PT
Cable Entry (Option)	2 x 3/4" NPT/M20/M25/PG13.5/PG16
Terminal Block (Standard)	8 Points
Terminal Block (Option)	12 & 14 Points / Solenoid Valve Connection 14 Points
Position Indicator	0° to 90° (Red for Close / Yellow for Open)
Painting	Black Polyester Powder Coating
Bracket	Steel / SUS / Aluminum

Radius LLC is ISO 9001:2008 certified.



Radius EX-900 Explosion Proof Limit Switch

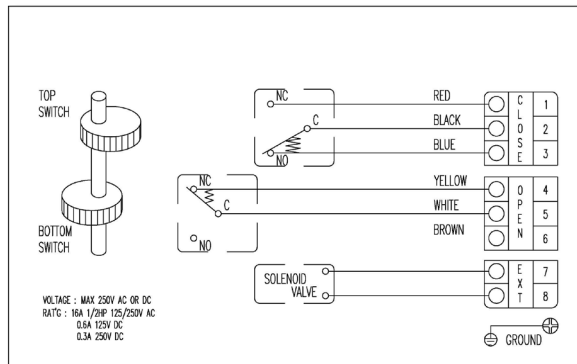
Ordering Code

EX-900-□

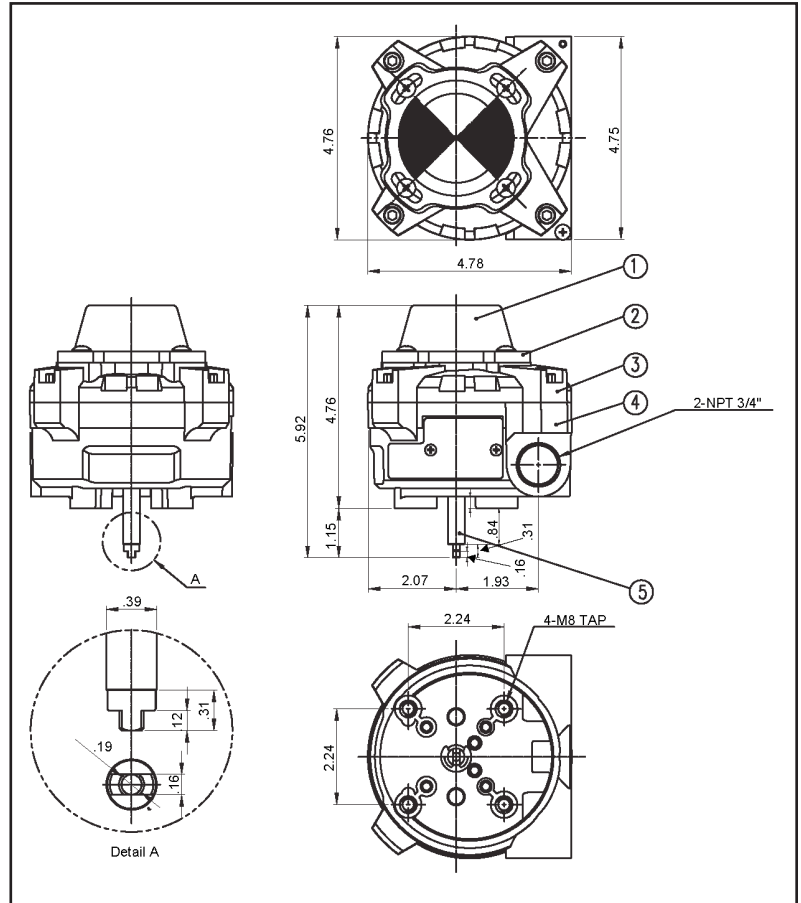
Options

- 0 - 2 SPDT Mechanical (Standard)
- 1- Proximity Sensor (PNP)
- 2- Proximity Sensor (NPN)
- 3- Proximity Sensor (DC 2 Wire)
- 4 - 3 SPDT Mechanical
- 5- 4 SPDT Mechanical
- 6 - 2 DPDT Mechanical



Typical Mechanical Limit Switch Wiring



*Contact sales for additional wiring diagrams



Brackets

BRACKET	ACTUATOR SIZE
	AB1 AD-005 - AD-005 through AD-030 - AS-030
	AB2 AD-040 - AS-040 through AD-500 - AS-500

Material List

NO.	PART NAME	MATERIAL	QTY
1	Indicator	ABS	1
2	Indicator Cover	Poly-carbonate(PC)	1
3	Base Cover	Aluminum	1
4	Base Body	Aluminum	1
5	Main Shaft	303 SS	1

Radius LLC is ISO 9001:2008 certified.