

radius

series **EW**



SERIES EW
ELECTRIC ACTUATOR



EW 350 Technical Data



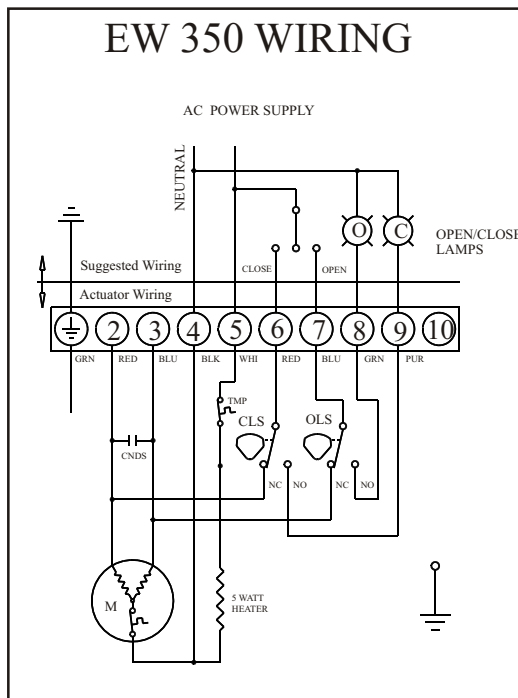
The Radius Series EW 350 actuator is the smallest in a series of hard anodized aluminum industrial actuators. The actuator is perfect for small ball and plug valves. The motor is a specially designed induction motor that produces high starting torques and is thermally protected from overheating. All series EW actuators are equipped with manual override and large dial position indication.

Specifications:

Rated Torque: 350 inch lbs.
Operating Speed: 15 seconds.
Power Consumption 10W.
Insulation Class: E.
Rated Current: .3A.
Weight: 15 pounds.
Enclosure: IP67, NEMA 4, 4X.
-10-160 deg.F.
Housing: Hard Anodized Aluminum, Polyester coated
Mounting to ISO 5211
Voltages: 110 and 220 VAC

STANDARD FEATURES:

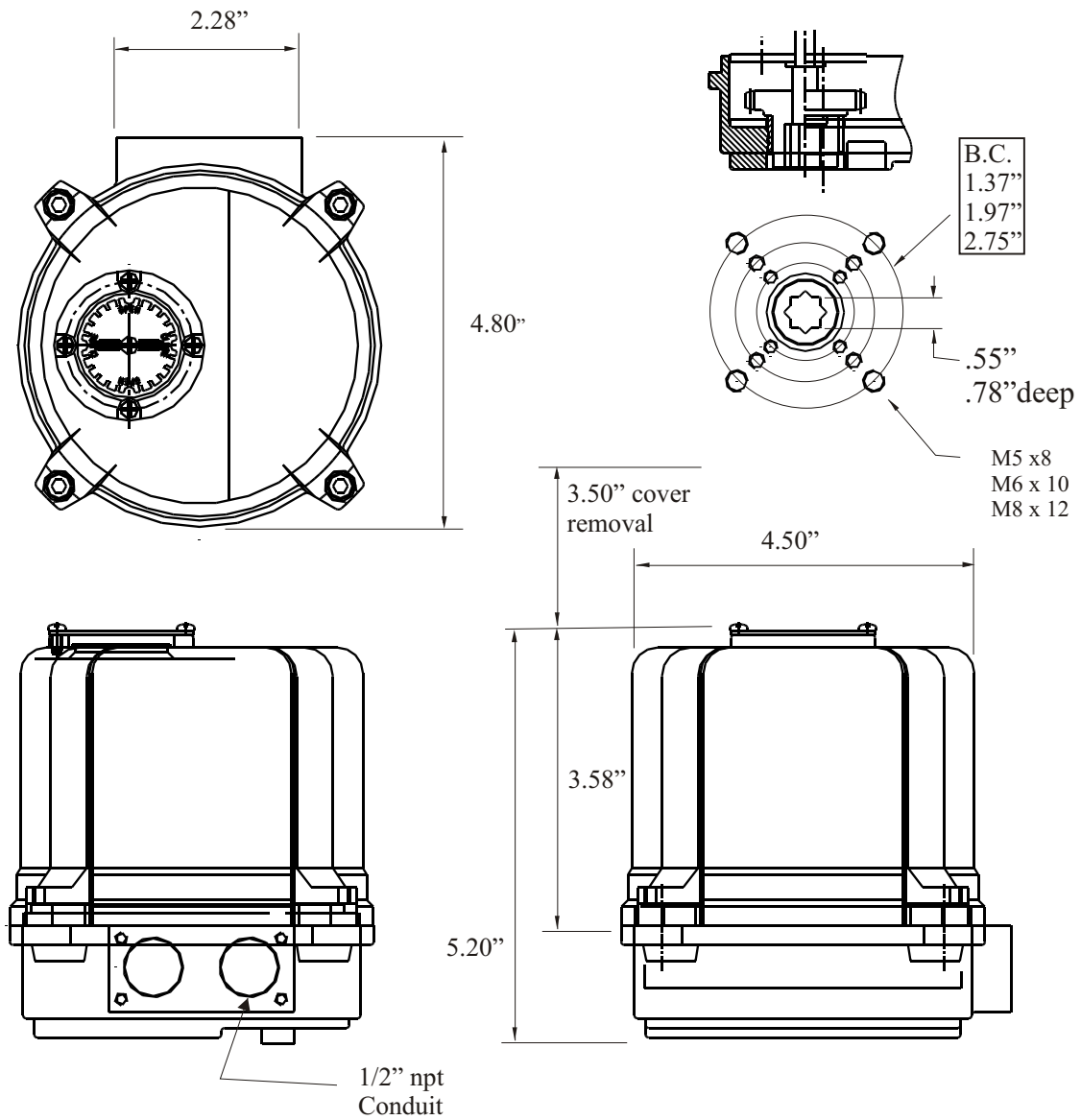
Heater/ Thermostat
Built in Thermal Protection
Rotation 90 deg. +/- 5deg.
Manual Override
Position Indicator
Worm Gearing: No Brake Required



High visibility position indicator standard on all EW series actuators.



EW 350 Dimensional Data





EW 700 Technical Data



Radius Series EW 700 quarter turn industrial actuator. The drive system utilizes a self locking combination spur and worm gear that requires no brake. The mounting is ISO 5211 and has a ISO star output shaft that easily direct mounts to most valves manufactured to accept actuators. The motor is a specially designed induction motor that produces high starting torques and is thermally protected from overheating. All series EW actuators are equipped with manual override and large dial position indication.

Specifications:

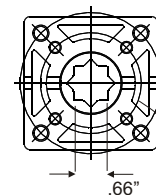
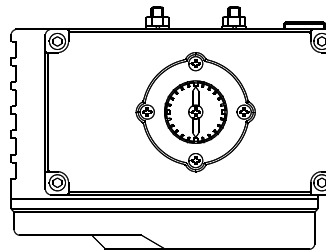
Rated Torque: 700 Inch Pounds
Operating Speed: 14 seconds.
Rated Current: .97
120VAC Standard
Optional 220/440 VAC and 24VDC
Enclosure: IP67,
-10-160 deg. F.
Housing: Hard Anodized Aluminum, Polyester coated
Mounting to ISO 5211

STANDARD FEATURES:

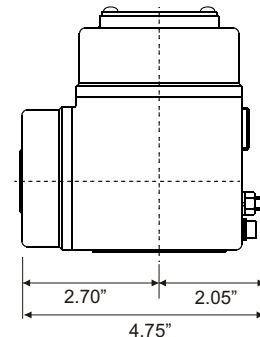
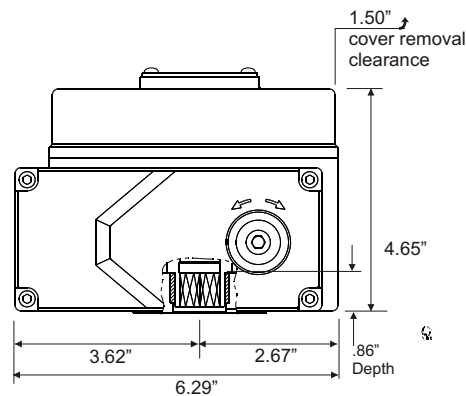
Heater/ Thermostat
Built in Thermal Protection
Rotation 90 deg. +/- 5deg.
Manual Override
Worm Gearing: No Brake Required
Two Auxiliary limit switches



Highly Visible Dial
Position Indicator



B.C. x Thd. x Depth
1.97" x M6 x .60"
2.76" x M8 x .70"



Options:

High resolutions 0-1000 ohm potentiometer for continuous feed back signal.
4-20mA current transmitter.
Position control board for precise positioning with remote 4-20mA signal, includes transmitter.
Local/ Remote switching station.



**EW 880
TECHNICAL DATA**



EW 880

Radius Series EW quarter turn industrial actuator. The drive system utilizes a self locking double worm gear that requires no brake. The mounting is ISO 5211 and has a removable drive bushing and can be ordered with a blank drive for custom machining. The motor is a specially designed induction motor that produces high starting torques and is thermally protected from overheating. All series EW actuators are equipped with manual override and large dial position indication.

Specifications:

Rated Torque: 880 In. pounds
Voltages 110VAC/220VAC
24VDC
Operating Speed: 21 seconds
Power Consumption: 18 watts
Insulation Class: E.
Rated Current: .55 Amps
Enclosure: IP67, NEMA 4, 4X.
-10-160 deg.F.
Housing: Hard Anodized
Aluminum, Polyester coated
Mounting to ISO 5211

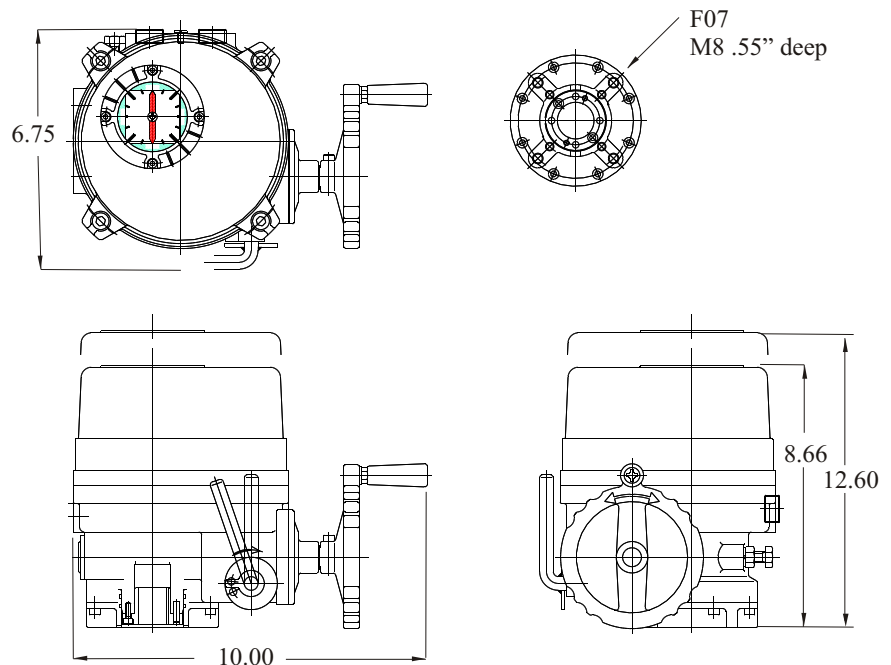
STANDARD FEATURES:

Heater/ Thermostat
Built in Thermal Protection
Rotation 90 deg. +/- 5deg.
Manual Override
Worm Gearing: No Brake



Large dial position indicators are standard on all EW actuators.

EW SERIES DIMENSIONS



**EW SERIES
TECHNICAL DATA**

**EW 1400
EW 2100
EW 3100
EW 4400**



Radius Series EW quarter turn industrial actuator. The drive system utilizes a self locking double worm gear that requires no brake. The mounting is ISO 5211 and has a removable drive bushing and can be ordered with a blank drive for custom machining. The motor is a specially designed induction motor that produces high starting torques and is thermally protected from overheating. All series EW actuators are equipped with manual override and large dial position indication.

Specifications:

Rated Torque: 1400, 2100, 3100 and 4400 inch pounds
 Operating Speed: per 90 deg.:
 1400 and 2100 26 seconds.
 3100 and 4400 31 seconds.
 Power Consumption:
 1400, 2100, 3100 : 40Watts.
 4400: 90 Watts
 Insulation Class: E.

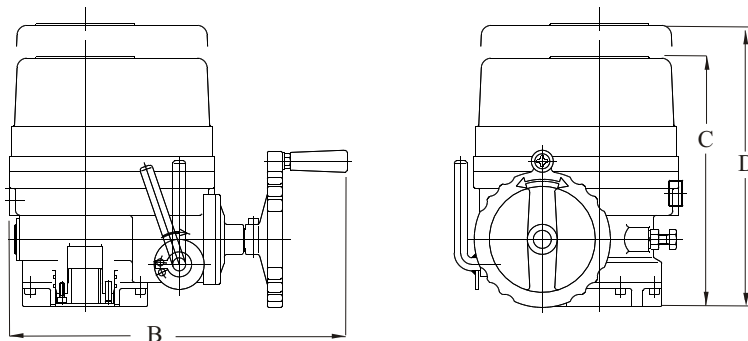
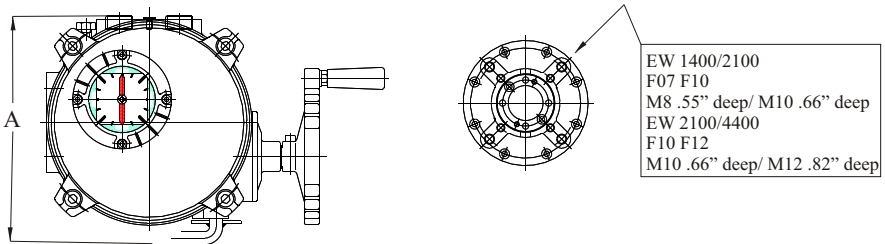
Enclosure: IP67, NEMA 4, 4X.
 -10-160 deg.F.
 Housing: Hard Anodized Aluminum, Polyester coated
 Mounting to ISO 5211

STANDARD FEATURES:

Heater/ Thermostat
 Built in Thermal Protection
 Rotation 90 deg. +/- 5deg.
 Manual Override
 Worm Gearing: No Brake
 4 SPDT Limit Switches 10A
 2 Torque switches.10A



Large Dial
Position
Indicator



EW SERIES	EW -1400/2100	EW-3100/4400
Torque (in. lbs.)	1400/2100	3100/4400
Power Consumption	40 Watts	40/ 90 Watts
Operating time	50HZ 26 sec.	50HZ 31 sec.
50/60 Hz	60HZ 22 Sec.	60HZ 26 Sec.
Output Shaft (D)	Blank Drive	Blank Drive
Rated Current(A)		
Single Phase	110/50 1.62	110/50 1.7/3.6
50/60Hz	110/60 1.72	110/60 1.8/3.9
	220/50 .87 220/60 .92	220/50 .92/1.6
		220/60 1.6/2.2
Rated Current(A)		
Three Phase	380/50/60 .32	380/50/60 .35
50/60Hz	440/50/60 .35	440/50/60 .58
Weight	33 pounds	44 pounds
Manual over-ride		
handle turns/90°	12	14

EW SERIES DIMENSIONS (in.)		
MODEL	EW 1400 EW 2100	EW 3100 EW 4400
FLANGE	F07 F10	F10 F12
A	9.00	9.61
B	13.31	13.94
C	10.08	11.34
D	14.65	17.00



EW 7000 & EW 9700 Technical Data



Radius Series EW quarter turn industrial actuator. The drive system utilizes a self locking double worm gear that requires no brake. The mounting is ISO 5211 and has a removable drive bushing and can be ordered with a blank drive for custom machining. The motor is a specially designed induction motor that produces high starting torques and is thermally protected from overheating. All series EW actuators are equipped with manual override and large dial position indication.

Specifications:

Rated Torque:
7000 and 9700 inch pounds
Operating Speed: 15 seconds.
Power Consumption 10W.
Insulation Class: E.

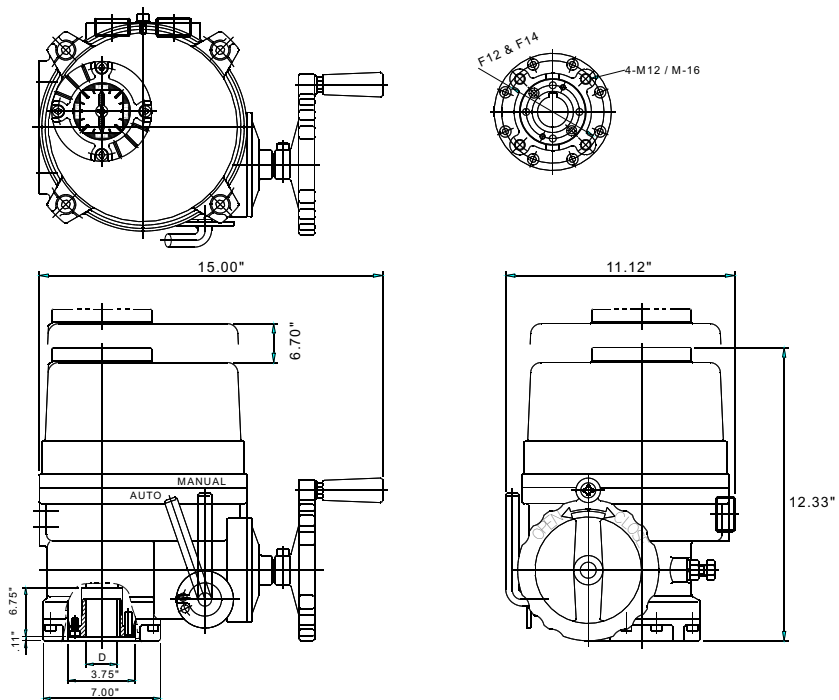
Enclosure: IP67, NEMA 4, 4X.
-10-160 deg.F.
Housing: Hard Anodized
Aluminum, Polyester coated
Mounting to ISO 5211

STANDARD FEATURES:

Heater/ Thermostat
Built in Thermal Protection
Rotation 90 deg. +/- 5deg.
Manual Override
Worm Gearing: No Brake
Required
Two Auxiliary limit switches



Highly Visible Dial
Position Indicator



EW SERIES	EW -7000	EW-9700
Torque	7000 Inch pounds	9000 Inch pounds
Power Consumption	180 Watts	180 Watts
Operating time 50/60 Hz	39/32 Sec.	39/32 Sec.
Output Shaft (D)	1.81" Star	1.81" Star
Rated Current(A) Single Phase 50/60Hz	110V 3.80/4.20 220V 2.05/2.20	110V 3.90/4.30 220V 2.15/2.30
Rated Current(A) Three Phase 50/60Hz	380V .82/.88 440V .82/.88	380V .84/.90 440V .84/.88
Weight	55 pounds	55 pounds
Manual over-ride handle turns/90°	17	25



4922 TECHNICAL DR.
MILFORD MI 48381
PHONE 248 685 0773

WEB PAGE: www.radius-eng.com