

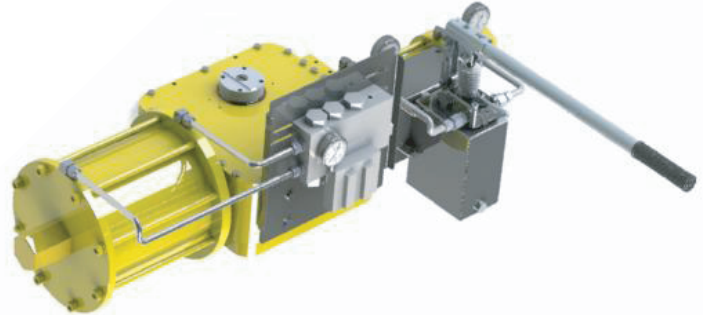


Radius DKS Y Series

General Description:

The Radius pneumatic scotch yoke actuators have been produced for more than 15 years. These actuators are popular for their high quality and durability and reduction of maintenance cost in production lines. For that reason, our actuators are used in the most demanding environments and services such as oil, gas and offshore drilling platforms. More details of the quality of the actuator used in this system can be seen in our Series K Scotch Yoke Actuator brochure. Stock of the key pieces allow us to give quick delivery time to our customers.

The linking surfaces of the actuators are designed according to ISO 5211 and VDI/VDE 3845. Design of the actuator is constructed according to ISO9001:2015, IEC 61508:2010, LOM 10ATEX6032 and European Pressure Equipments Directive 97/23/EC 3.10



Radius LLC is ISO 9001:2015 Certified.

STANDARD ACTUATOR SCOPE:	
DOUBLE ACTING	
TORQUES:	TO 850,000 INCH POUNDS
WORKING PRESSURE:	140 TO 2200PSI
AIR SUPPLY:	AIR OR NON CORROSIVE GAS
WORKING TEMPERATURE:	FROM -10 TO +170°F
ROATATION:	90° ANTICLOCKWISE IN OPENING
ADJUSTMENTS:	+/-5° TO OPEN +/-5° TO CLOSE
LUBRICATION:	ACTUATORS LUBRICATED FOR LIFE



Radius DKS Y Series

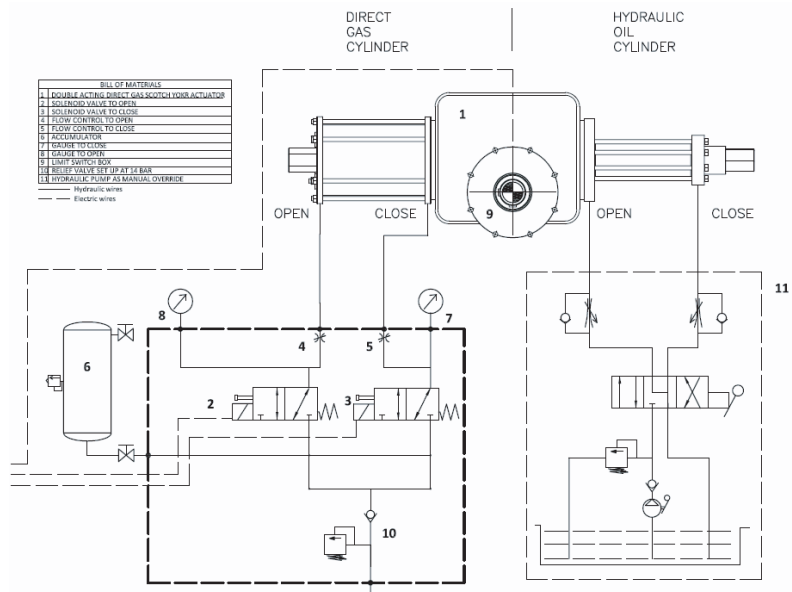
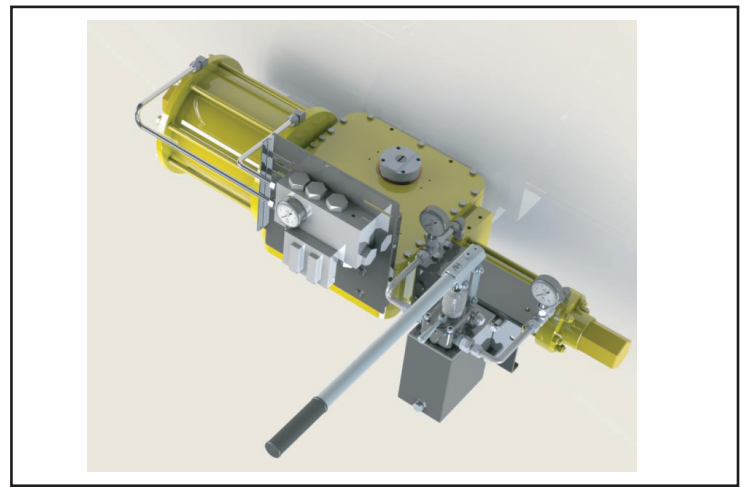
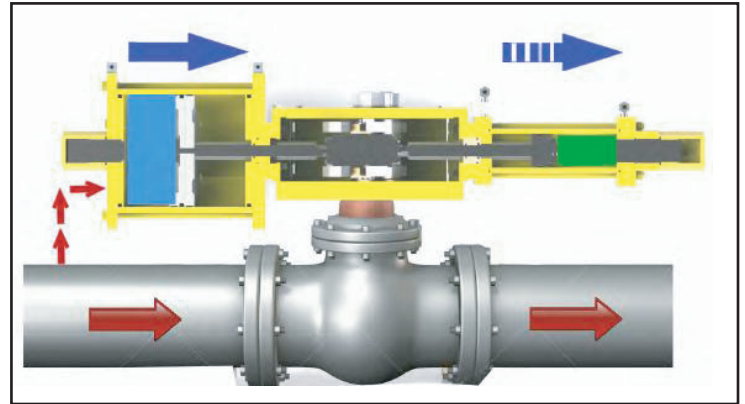
Function:

Direct gas pneumatic / hydraulic actuator takes gas from the pipeline and is operated by the gas cylinder.

The actuator has a hydraulic close loop that regulates the movement of the actuator. The local control of the manifold drives the oil and the gas to the desired position of the valve. The manifold is designed as per requirement of the specifications of each application.

This manifold can drive the actuator locally for manual application, with solenoid valves for remote application, hi-lo pressure switch, line breaker, etc, etc.

Optionally this can be installed to the actuator accumulator.

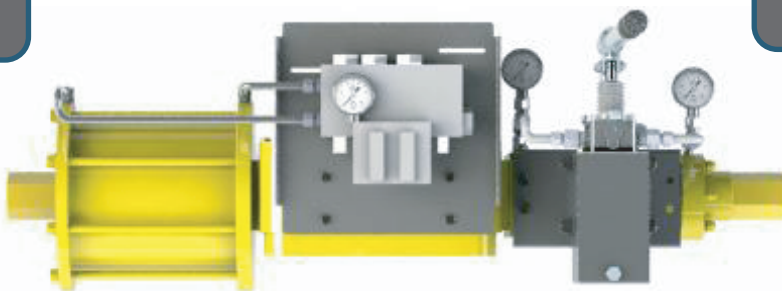




Radius DKS Series

AIR/GAS
CYLINDER
AVAILABLE FOR
2200PSI

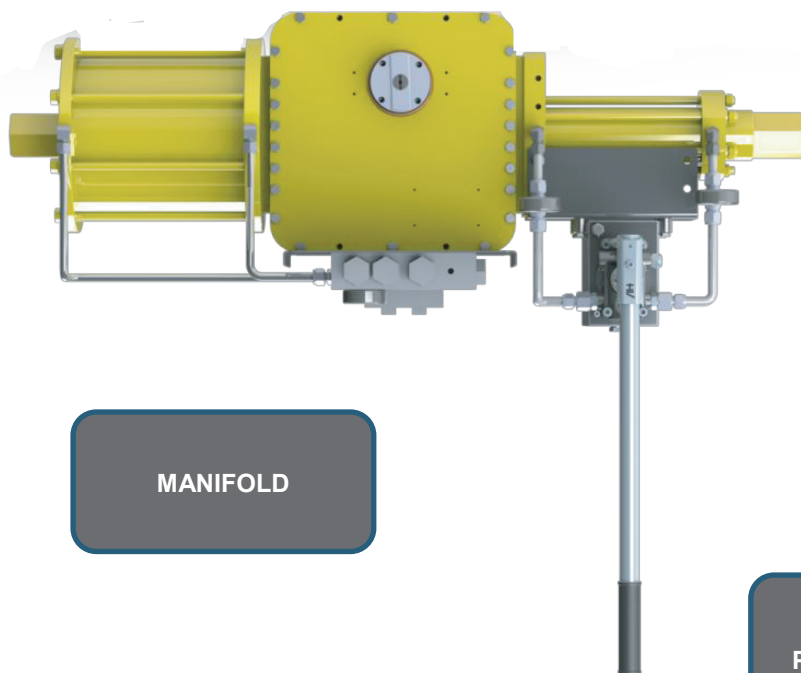
HYDRAULIC
CYLINDER



TRAVEL STOPS

SCOTCH YOKE
ACTUATOR BODY

HYDRAULIC
CLOSED LOOP



MANIFOLD

MANUAL HAND
PUMP AS OPTION