



Radius SERIES ES-900

Description:

Type ES-900

IP 67 Enclosure, NEMA 4 and 4x

Mechanical Switch

Two SPDT

Voltage: Max 250VAC or DC

.6A at 125VDC

.3A at 250VDC

16A at 125, 250VAC

Standard Features:

Visual Position Indicator

Quick Set Cams

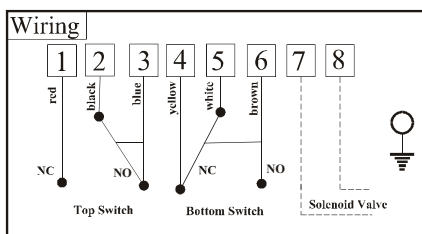
Dual 1/2" Conduit Entries

Captive Cover Bolts

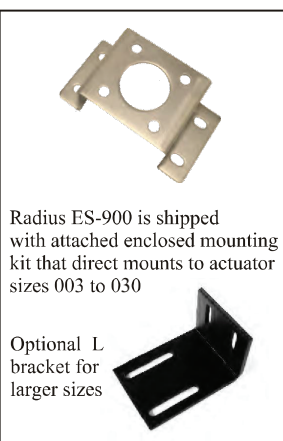
Standard Mounting

Materials Of Construction:

Position Indicator-	Polycarbonate
Housing-	Die-Cast Aluminum
Stem-	304 Stainless Steel
Bearings-	Bronze
O-Rings-	Nitrile
Switch Cams-	Polycarbonate
Cover Screws-	304 Stainless Steel



Radius LLC is ISO 9001:2015 Certified.



DIMENSIONS

